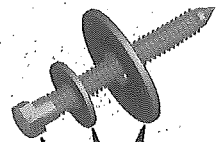
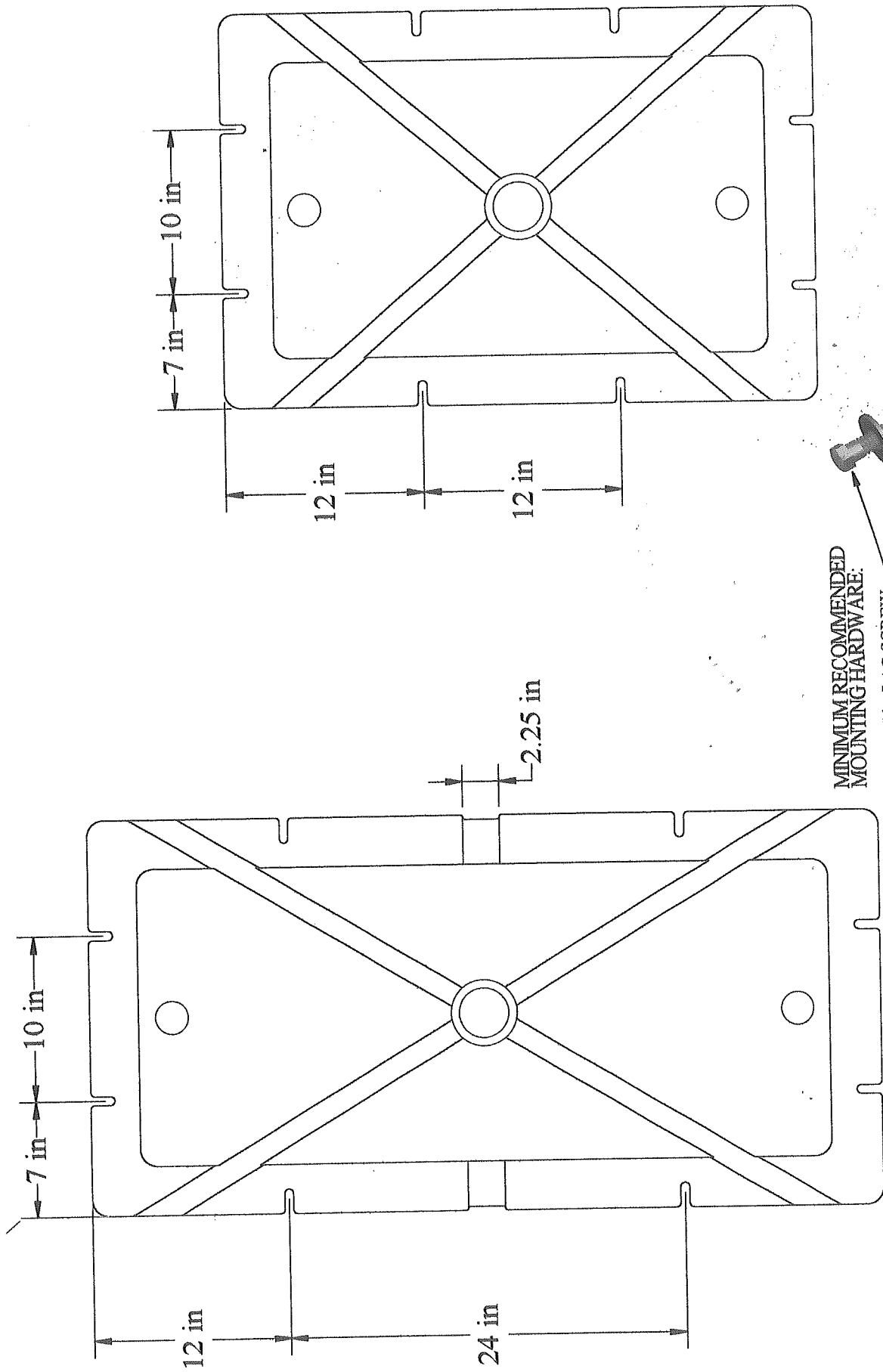


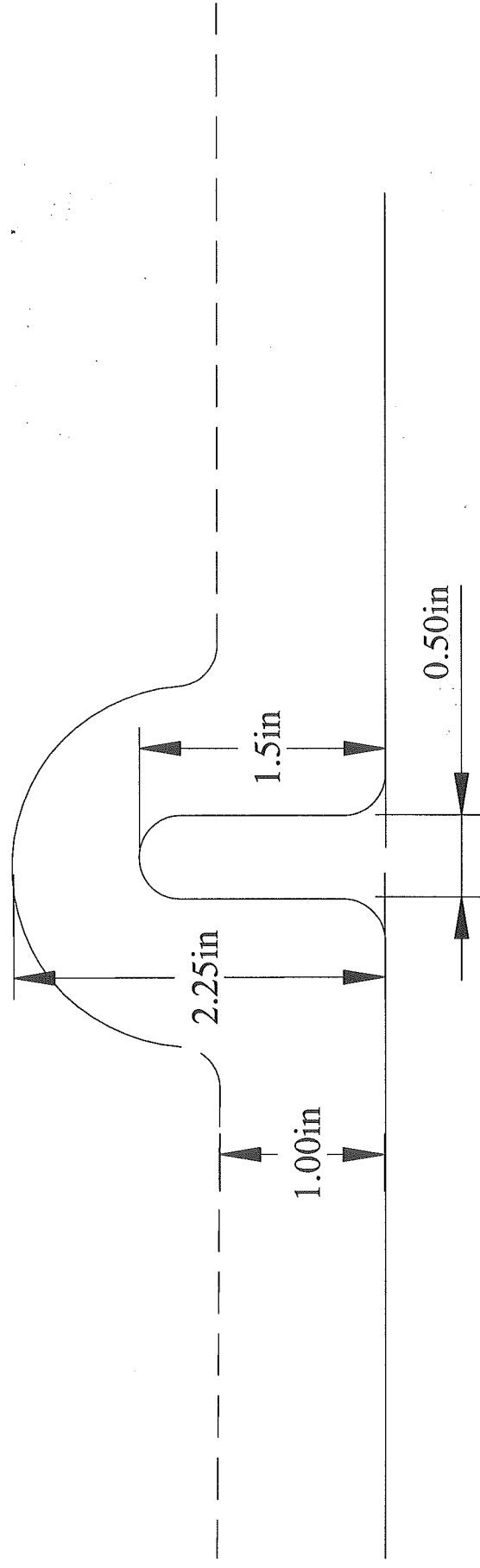
# TAYLOR MADE PRODUCTS



**MINIMUM RECOMMENDED MOUNTING HARDWARE:**

- 3/8" X 3" lg. LAG SCREW
  - 3/8" WASHER & 5/8" WASHER
- American National Standard Type A Plain Washers  
(Series W)

*Use galvanized hardware for longer life or salt water applications.*



Dimensional detail of dockfloat mounting flange