



Taylor Made
PRODUCTS.

Dock Step Handrail

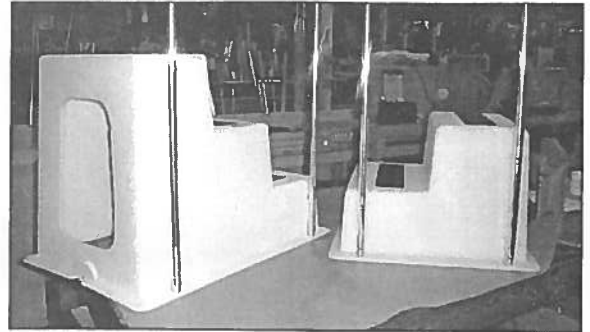
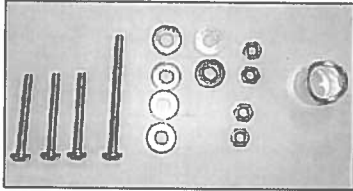
Installation Instructions

for 2 & 3 Step Models

TOOLS REQUIRED: Portable drill, 1/4" drill bit, Phillips head screw driver, 7/16" wrench or adjustable wrench.

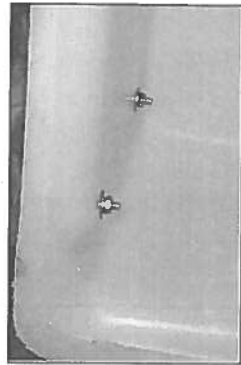
HARDWARE INCLUDED:

- (3) short screws
- (1) long screw
- (6) washers
- (4) nuts
- (1) Plastic spacer

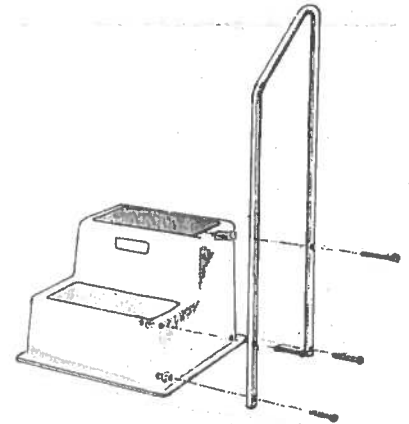
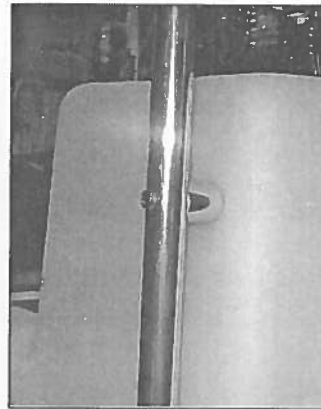
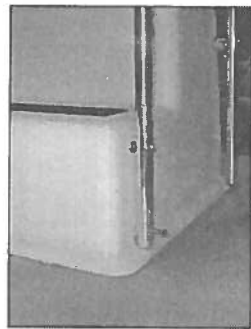


STEP 1: Select a side (right or left) to mount the hand railing. Place the base of hand railing over the alignment indentations at the base of the step.

STEP 2: With the hand railing aligned and tight to the base, use the handrail as drilling template to locate and drill both lower holes in the step. Place (1) shorter bolt thru each of the holes and fasten with a washer and nut from inside the step unit and secure to finger tight. (Note: The step unit may have pre-molded drilling marks that DO NOT line up exactly with the holes in the hand railing due to shrinkage variation. Always use the hand rail as a drilling template to assure the mounting holes align.)



STEP 3: Use the handrail as a drilling template to locate and drill the upper holes in the step. Place (1) shorter bolt in the top hole at the front of the railing and fasten with a washer and nut from inside the step unit and secure to finger tight. Place (1) long bolt through the upper most hole at the back of the railing and slide the plastic spacer over the bolt before inserting the bolt through the hole in the step. Be sure the curved part of the spacer is positioned against the railing tube. Place a washer and nut on the bolt from inside the step unit and secure to finger tight.



STEP 4: Securely tighten all (4) bolts with a wrench and Phillips head screwdriver.

Warranty Information

TAYLOR MADE PRODUCTS SHALL NOT BE LIABLE FOR SPECIAL, INCIDENTAL, OR CONSEQUENTIAL DAMAGES, NOR FOR ANY DAMAGES OR REMEDIES NOT SPECIFICALLY SET FORTH IN THIS WARRANTY. TAYLOR MADE PRODUCTS SHALL NOT BE LIABLE, IN THE EVENT, FOR ANY DAMAGES IN EXCESS OF THE COST OF THE PRODUCT. Some states do not allow the exclusion or limitation or consequential damages, so the above limitation or exclusion may not apply to you.

THE IMPLIED WARRANTIES OF MERCHANTABILITY AND FITNESS FOR A PARTICULAR PURPOSE SHALL NOT BE EXTENDED BEYOND THE DURATION OF THE EXPRESS WARRANTIES HEREIN. Some states do not allow limitations on how long an implied warranty lasts, so the above limitation may not apply to you.

All potentially defective products must receive a Return Goods Authorization (RGA) # before they are returned to Taylor Made Products. Products returned without an RGA# will be refused, and the product will be returned to sender. To receive an RGA#, call us at 1-800-628-5188. All products returned to us MUST be accompanied by a proof of purchase, without exception. Freight on defective products is the responsibility of the consumer (UPS is the preferred method of returning a product to us). Repaired or replacement products will be shipped back to the consumer freight prepaid. This written warranty is the only warranty expressed or implied, made by Taylor Made Products. No person is authorized to change, add to, or create any warranty or obligation other than set forth herein. This warranty gives you specific legal rights, and you may also have other rights which vary from State to State. To obtain service under this warranty, contact Taylor Made Products at the following address:

Taylor Made Products • 65 Harrison St. • Gloversville, NY 12078 • 518-773-7400 • www.taylormadeproducts.com • sales@taylormadeproducts.com

Freight on returned products is the responsibility of the consumer. Repaired or replacement products will be shipped back to the consumer freight prepaid.

Taylor Made Products • www.taylormadeproducts.com

A Member of the Taylor Made Group

© 2010 Taylor Made Group, LLC • Gloversville, NY 12078, Taylor*Made® and Taylor Made Products® are trademarks or registered trademarks of Taylor Made Group, LLC in the United States and in other countries